

MODEL QUESTION PAPER
DEPARTMENT OF HUMAN GENETICS
SUBJECT : HGT-II HUMAN GENETICS & CYTO GENETICS
(UNDER CBCS PATTERN)

B.SC FIRST YEAR
TIME-3HRS

SEMESTER - II

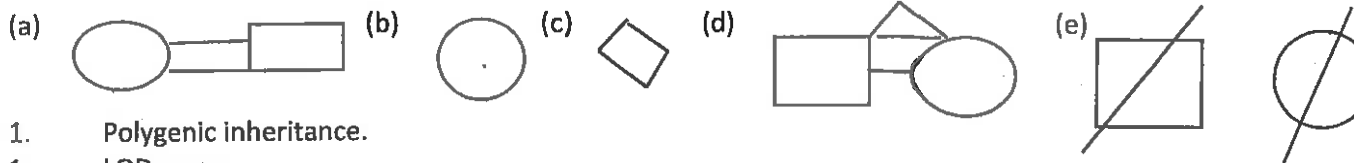
MAX MARKS-75

SECTION - A

I. ANSWER ANY FIVE QUESTIONS
EACH QUESTION CARRIES 5 MARKS

(5 X 5 =25 MARKS)

1. Pleiotropy.
2. Identify the symbols given.



1. Polygenic inheritance.
1. LOD score.
1. Nomenclature of banding.
1. Difference between monozygotic & dizygotic twins.
1. Translocations.
1. Genetic Marker.

SECTION - B

II. ANSWER ALL QUESTIONS
EACH QUESTION CARRIES 10 MARKS

(5 X 10 = 50 MARKS)

1. A) Write about sex – linked inheritance in Human beings.
(OR)
B) What are genomic imprinting & uniparental disomy.
1. A) How are multifactorial disorder affected by genetics. Explain with an example.
(OR)
B) How does nature and nurture influence human development.
11. A) How does Genetic map differ from physical map.
(OR)
B) Write a note on multipoint mapping.
12. A) Define Mitosis. Explain the stages with a neat labeled diagram.
(OR)
B) Explain banding and its techniques.
- 13) A) Explain the syndromes that occur due to changes in structural chromosomes.
(OR)
B) Describe the stages of Meiosis with a neat labeled diagram.

B.A. Honors
Genetics & Cytogenetics
Dr. A. Bala Krishna
Principal & BOS in Human Genetics

(Dr.A.BALA KRISHNA)
PRINCIPAL & BOS IN HUMAN GENETICS